

PERGO®

ACCESSORIES

Laminate Stair Covers- Trondheim
English

Laminate Stair Covers- Trondheim

General information

Creating an elegant staircase that matches the rest of your interior is straightforward with our Laminate Stair Covers. You can match them with the design of your Trondheim Laminate floor and they are scratch and wear resistant, water-resistant, easy to clean and easily installed. It's without a doubt the most efficient way to renovate your stairs.

National regulations on floor application must always be complied.



CONTENTS

95cm: 4 Laminate stair covers
120cm: 2 Laminate stair covers

COMPOSITION

HDF and glue

COLOUR

Colour-matched

ORDER CODE

PGSTRBTRO(-)

DIMENSIONS

1203 x 138 x 72 mm

Applicable for:

- Staircases that have an existing squared bullnose of maximum 42mm high.
- Staircases that have 90° squared steps.

Laminate Stair Covers- Trondheim

Applications

With the Pergo Laminate Stair Covers, you can renovate staircases in the style that you like.

1. **Colour-matched staircase**

Finish the riser with an additional cut-to-size floor panel for a full colour-matched staircase.



2. **Staircase with painted risers**

Paint the risers with a contrasting colour to accentuate your staircase.



Laminate Stair Covers- Trondheim

Features

Lift your stair to the next level! With our Laminate Stair Covers, you'll have a total makeover in no time.

- **Made from our floor planks**

Therefore we can guarantee the same benefits as our floors.

- **Identical colour match**

Since the Laminate Stair Covers are made out of our Laminate floors, the Stair Covers match your floor perfectly.

- **Scratch and wear resistant**

Its ultra-strong core and unique top layer help protect against stains, scratches and impact damage.

- **Easy to install**

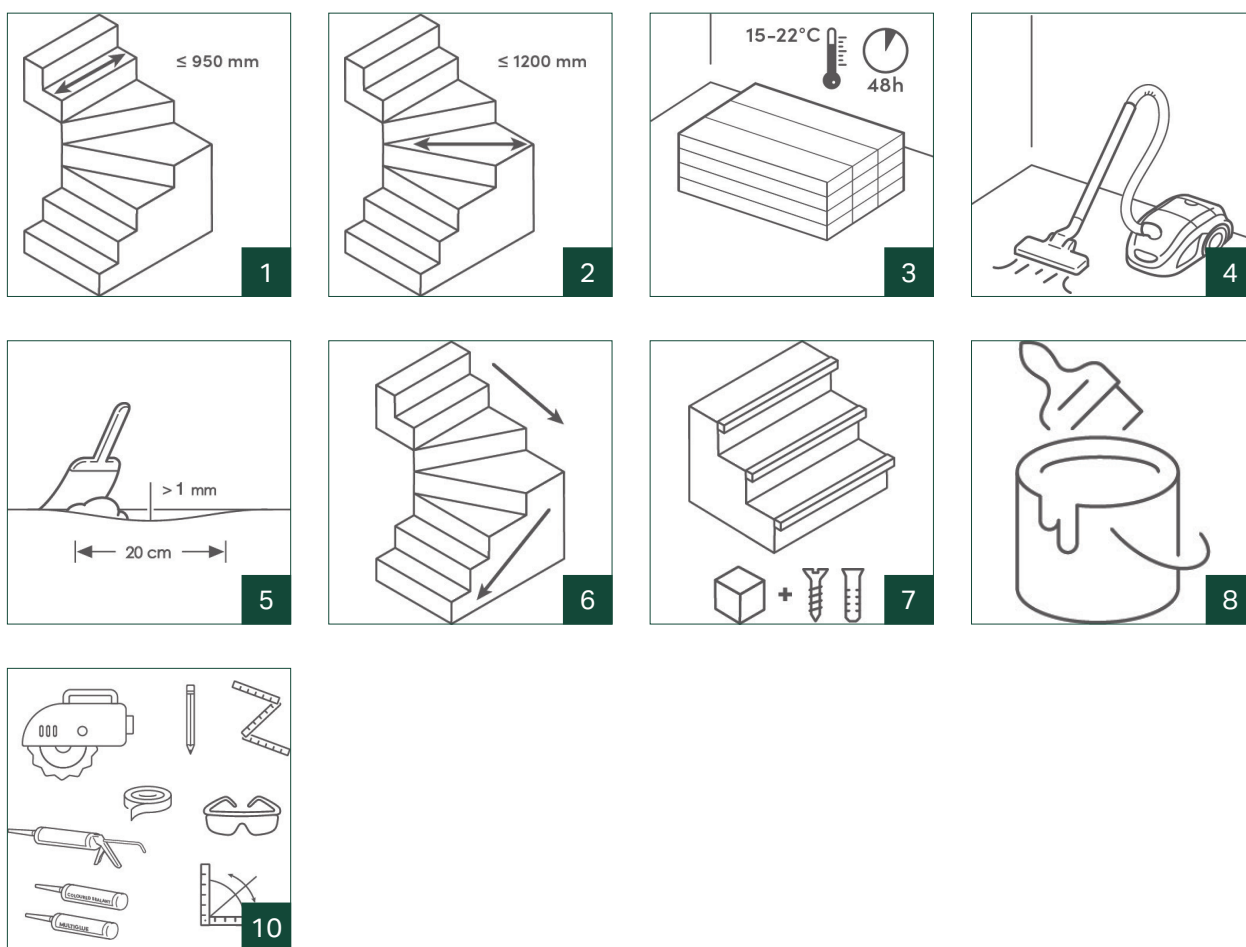
Easily install the Laminate Stair Covers on your existing staircase with the Pergo Multiglue.



Laminate Stair Covers- Trondheim

Preparation

Preparation is the key to success! Follow these steps carefully to guarantee a good installation.



1. The staircovers are designed for closed stairs with risers, with a maximum width of 950 mm or 1200 mm in a standard residential environment.
2. If you have a turn in your stairs, take into account the width of the turned step.
3. The floor and room temperature needs to be maintained prior to, during and for at least 48 hours after the installation is completed. Installation must be performed between 15° - 22°C and a relative humidity of RH 30%-75%. Cut out and preserve the label on the box as this information contains the product identity.

Laminate Stair Covers- Trondheim

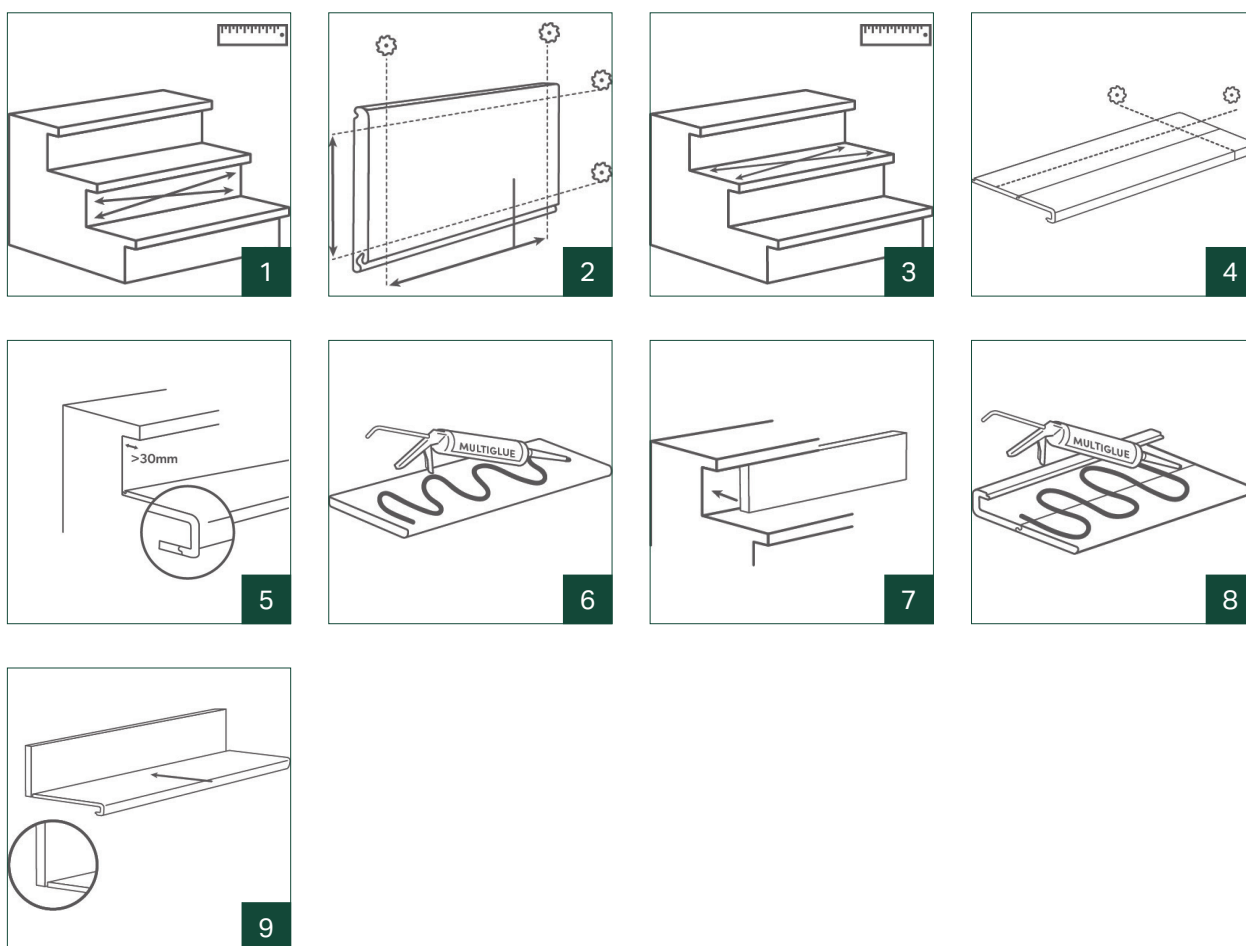
4. Remove all dirt, dust and grease from the stair.
5. Any unevenness of more than 1mm (0,04inch) over a length of 20cm (7,87inch) must be levelled out, but we advise levelling out the full stairbase to obtain the best results. Bumps should be removed by sanding or scraping.
6. Start from the top and work your way down. Always perform a dry fit before gluing the Laminate Stair Covers.
7. If the stair has no bullnose of its own, create a bullnose yourself.
8. Ensure that the Laminate Stair Cover is fully supported. Use a cut-off to verify. Painting the sides, risers or seams can be done before installing the Laminate Stair Cover.
9. To minimise chipping, ensure that the blade teeth enter the face side first.
10. Needed materials:
 - Pergo Laminate Stair Covers and Laminate planks, consult the sales organiser to check how many planks and stair covers you need for your project
 - Pergo Multiglue - 1 cartridge of glue per 2 steps
 - Pergo Coloured Sealant
 - Caulking gun
 - Tape measure or folding ruler and pencil
 - Tool of your choice to measure angles (eg. Pivot Square)
 - Crosscut and plunge saw that can cut through the 60mm Stair Cover, multitool (mind the thickness of the stair cover, be sure to use a compatible plunge saw and a new saw blade)
 - Spare blades
 - If the stair has no existing bullnose, foresee wooden bars, screws and plugs to create a bullnose. The wooden bars should be 38 x 30 mm for painted risers and 38 x 40 mm for colour matched risers.
 - Tape
 - For longer bullnoses, wood glue

Laminate Stair Covers- Trondheim

Installation

Colour-matched staircase

Below is a list of the installation steps to obtain a correct installation of a fully colour-matched staircase. Please start from the top of your stairs.



1. Vertical sides: Measure the exact height and width of each riser.
2. To saw a floor plank to size, start measuring from the groove on the long side. Also saw off all other click profiles.

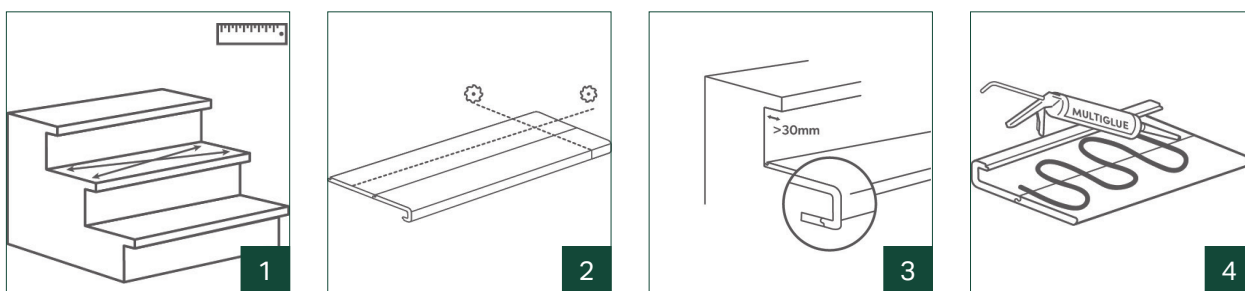
Laminate Stair Covers- Trondheim

3. Horizontal sides: Measure the exact shape of each step.
4. Click together a Stair Cover and a Laminate plank. Saw the full Laminate Stair Cover to size.
5. If the bullnose stands out more than 30 mm from the riser, an additional plank can be clicked in. Tape these two parts together on the backside.
6. Glueing - vertical side: Always perform a dry fit before glueing the stair. Start from the top and glue down the vertical frontsides first. Use the recommended glue and glue in a wavy motion so enough glue is applied.
7. Attach each floor panel to the corresponding vertical side of each step.
8. Glueing - Horizontal sides: Always perform a dry fit before glueing the stair. First of all, glue down the upper staircover. If the floor on the upper level is installed floating, make sure you use an Incizo between the glued down upper staircover and the floating floor. For each step, click all parts together to cover the tread (the staircover and the piece of floor panel) so that one full staircover is formed. Apply glue on the stairbase in a wavy motion and make sure enough glue is applied.
9. Push each staircover against the vertical side. Repeat this for every step. Tip: chipping can be masked by installing the Stair Cover under the riser. Use the factory made edge at the groove side of the plank as the bottom of the riser. Spacers help maintain the riser in place during installation
10. Try to avoid walking on it for 24 hours to ensure the drying time of our Pergo Multiglu.

Laminate Stair Covers- Trondheim

Staircase with painted risers

Below is a list of the installation steps to obtain a correct installation of staircase with painted risers.

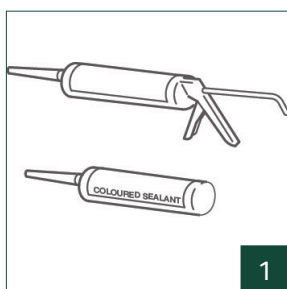


1. Measure the exact shape of each horizontal side of each step.
2. Click together a Stair Cover and a Laminate plank. Saw the full Laminate Stair Cover to size. Tip: chipping can be masked with matching sealant.
3. If the bullnose stands out more than 30 mm from the riser, an additional plank can be clicked in. Tape these two parts together on the backside.
4. Glueing: Always perform a dry fit before glueing the stair. First of all, glue down the upper staircover. If the floor on the upper level is installed floating, make sure you use an Incizo between the glued down upper staircover and the floating floor. For each step, click all parts together to cover the tread (the staircover and the piece of floor panel) so that one full staircover is formed. Apply glue on the stairbase in a wavy motion and make sure enough glue is applied.
5. Try to avoid walking on it for 24 hours to ensure the drying time of our Pergo Multiglu.

Laminate Stair Covers- Trondheim

Finishing

Below is a list of the finishing steps to obtain the perfect look of your staircase.

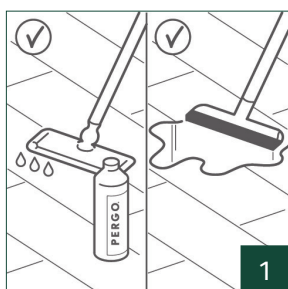


1. Finish seams with Pergo Coloured Sealant (PGKIT(-)) to hide any imperfections. The Coloured Sealant is available in white and different matching colours to your floor. The Sealant is also paintable!

Laminate Stair Covers- Trondheim

Maintenance

Maintenance made easy!



1. Maintain your finished staircase in the same way as your Pergo Laminate floor with our Pergo Floor cleaner. See pergo.com for Laminate maintenance instructions.